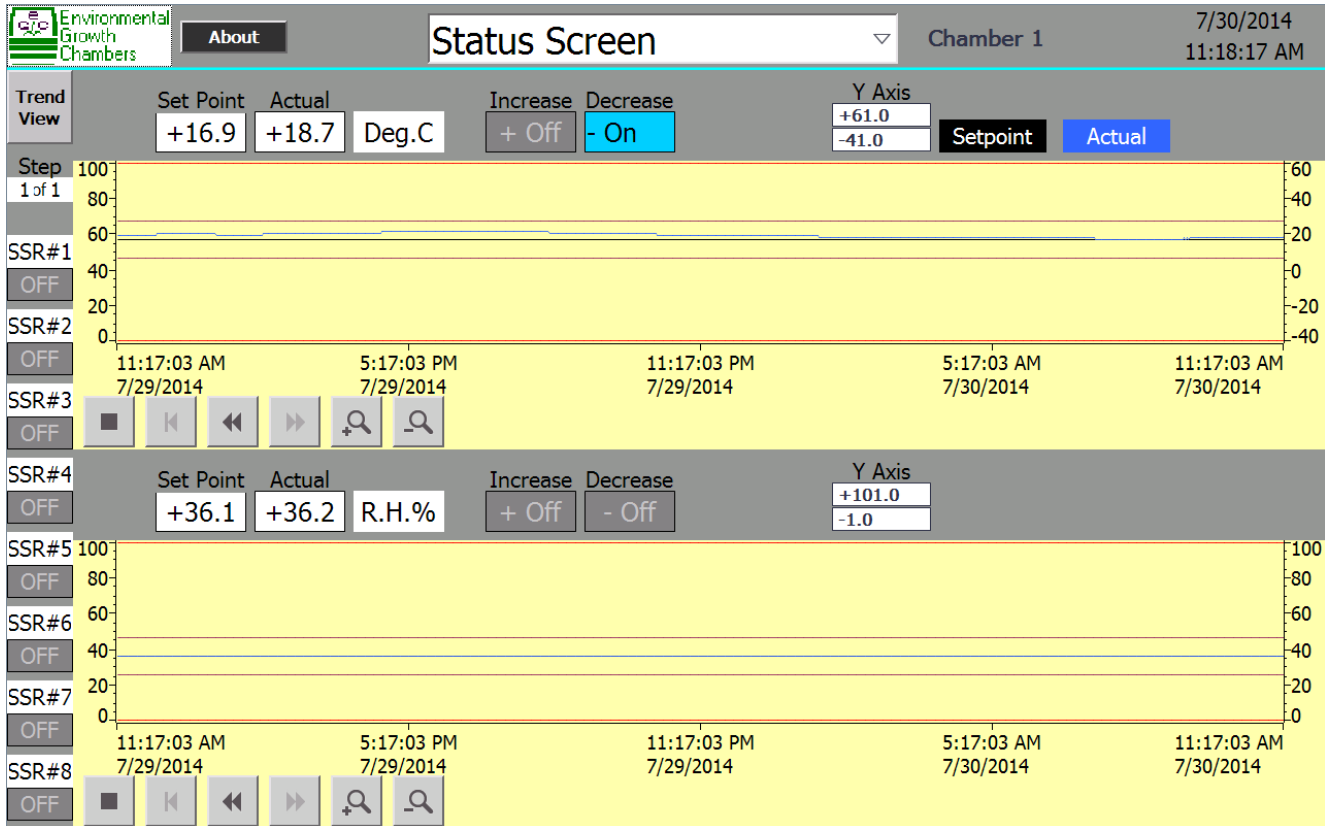




C6 Control System with ECoSys™ Software



- Intuitive ECoSys user interface on industrial color touch-screen display, optional customization
- Chamber interface scalable for multiple closed-loop and open-loop control channels
- Ability to accept additional analog or digital inputs
- Real-time digital and graphical display of all control parameters
- Real-time, 24 hour programming for all channels or file-based, setpoint profile execution
- Data for user selected historical period displayed for each closed-loop control channel
- Automatic local logging of control parameters to portable media
- Relative and Absolute Alarms with two-stage output: Alert and Shutdown
- Built-in, multi-level security features give system administrator complete control over use of interface screens
- Optional Sm@rtServer remote control from computer, tablet or smartphone
- PLC-based control system
- Optional 21 CFR, Part 11 compliant
- Optional ECoSys CCS™ central control & monitoring system allows remote control and data collection

Technical Specifications

User Interface (HMI)

- Industrial, color touch-screen display; 7" standard; Optional larger sizes available
- Buttons and pull-down menus designed to be touch-screen driven
- User-defined chamber and channel labels
- Complete local data logging of histories to portable SD card media for graphing and export
- 60 time line program steps, optionally expandable as needed
- Selectable global ramping for temperature and RH control
- File-based, setpoint profile execution for multi-day or seasonal programming
- Built-in, multi-level security features give system administrator complete control over use of interface screens with user programmed Usernames and Passwords
- Non-volatile program, configuration and historical data logging memory
- Service Screen permits manual control of all outputs without changing programmed setpoints
- Ethernet/Profinet network capability for optional remote access, control and monitoring
- Optional remote access permits diagnostics and control from computer, tablet or smartphone
- Optional ECoSys CCMS™ central control and monitoring system allows remote control and data collection
- Optional 21 CFR, Part 11 compliant

Chamber Interface (PLC)

- Standard configuration: (2) Analog Inputs: 0 or 4-20mA; or ±10V; or ±5V; or ±2.5V
- (2) Analog Outputs: 0 or 4-20mA; or -10 to +10V
- (14) Digital Inputs: 24 VDC, 1mA
- (18) Digital Outputs: Relay 2A, 5 to 30VDC or 5 to 250 VAC
- Configuration is optionally scalable as needed
- Two closed-loop control channels standard, optionally expandable as needed
- Closed-loop temperature control with proportional and on/off outputs, selectable in °C or °F
- Closed-loop relative humidity (RH) control with proportional and on/off outputs
- Temperature or RH control channels are user assignable to any process (e.g. CO₂ control)
- User scalable 4-20 mA sensor support
- Nine standard open-loop control circuits, optionally expandable as needed, for lights or other on/off switchable operations
- Relative and absolute alarms with Two stage alarm outputs: Alert and Shutdown
- Built-in defrost timer with selectable temperature inhibit/terminate
- Ethernet/Profinet network capability for interconnecting groups of controllers and displays
- Optional 4-20 mA outputs definable for control(s) or sensor monitor(s)



Environmental Growth Chambers

510 East Washington Street
Chagrin Falls, Ohio 44022
USA
www.egc.com

800.321.6854
440.247.5100
Fax 440.247.8710
[e-mail sales@egc.com](mailto:sales@egc.com)